

IT solutions for your business

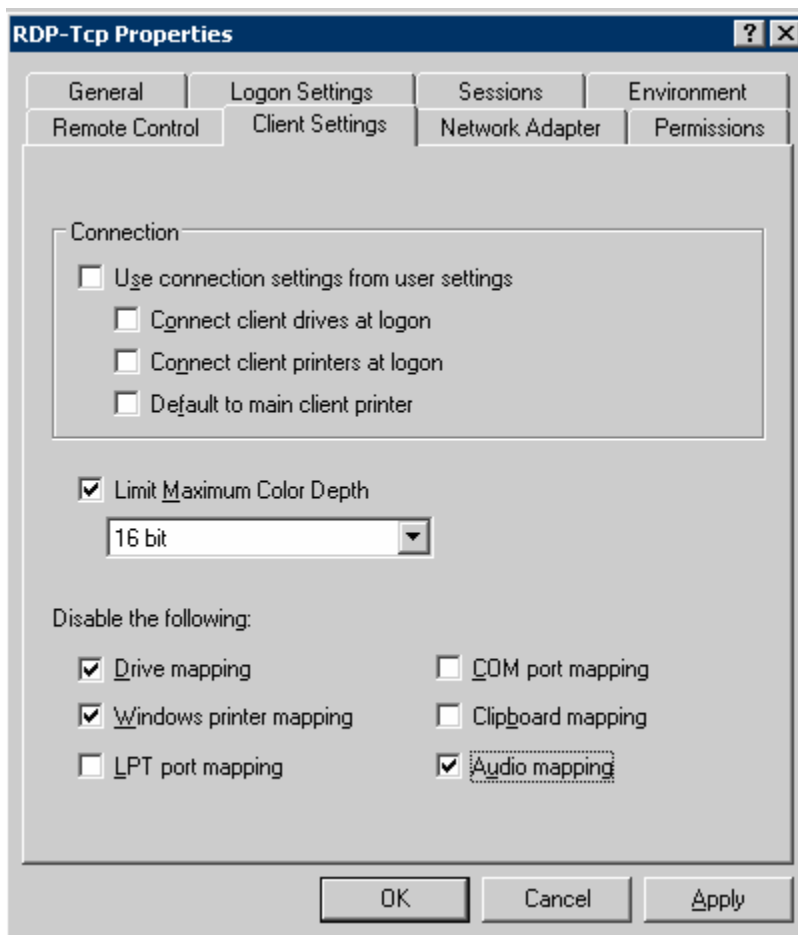
HC 33 Box 2589
Las Vegas, NV, 89178
Phone: 702-951-9427

Suggested settings for terminal services on production systems

Edit the property pages of each server (domain or standalone) using the Terminal Services Configuration snap in to the settings below. The settings are intended for servers that run Terminal Services in Administrative Mode. Terminal Services in Client mode may require these settings to be adjusted to reflect your business need.

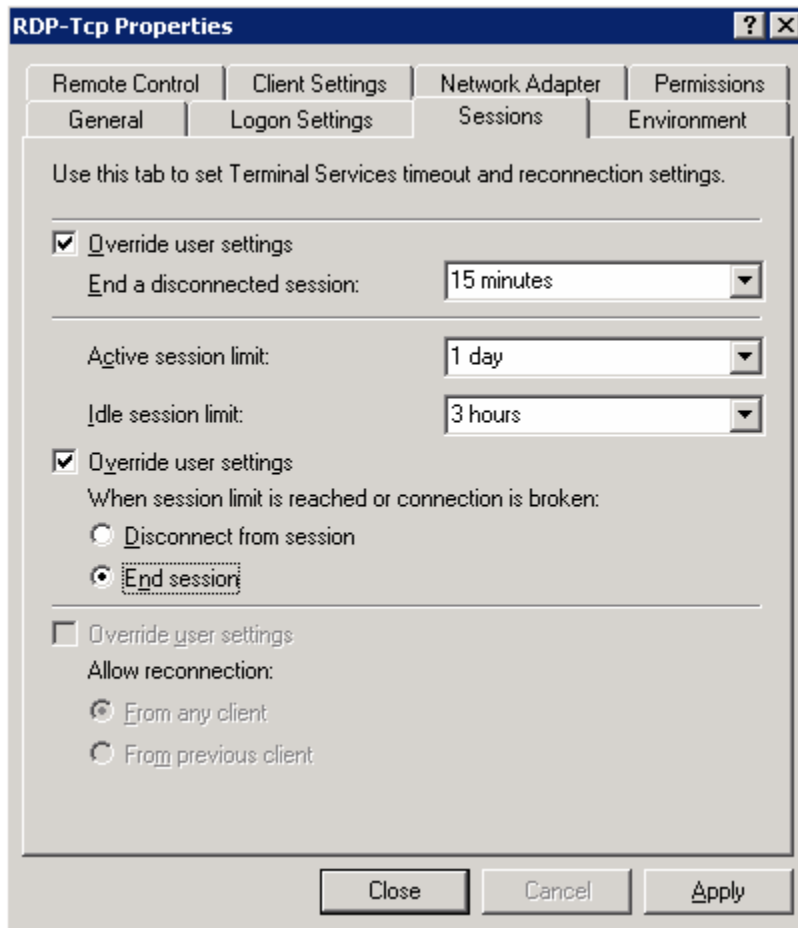
Client Settings Tab:

Disable client drive, audio and printer mapping. Drive mappings may pose a security risk. Printer mappings may cause automated driver installation or event log entries that drivers are missing. Audio mapping is in general not required and reduces responds time and increases bandwidth requirements.



Session Tab:

End a Terminal Services sessions if one of the following conditions is met as the administrative mode is limited to 5 concurrent connections at any time. Session disconnected, idle time exceeded or maximum session time reached.



Direct feedback to <http://hostmeister.com/contact.asp>